

ZIP NVR & DVR Firmware Update Gen2

1.1 Information

Be aware that after applying a new firmware the device will require defaulting, so some of its settings will inevitably change. This means all settings will need to be re-entered after applying the firmware.

The latest firmware for our products are available online .. <http://zipdvr.com/firmware.html>

You should compare your camera's current firmware against those available online as follows :

1. On the Recorder, Go to **Tools > Info**
2. Check the firmware of your recorder compared with the ones online;
EXAMPLE :- Older V8.1.0-**20190627**
Newer V8.1.0-**20200418**

The text in red indicates the release date of a particular firmware, **2019/06/27** is older than **2020/04/18**.

Make a note of your current network settings so that these can be re-entered into the DVR if necessary.

DCHP Tick		Gateway	
IP Address		Preferred DNS	
Subnet Mask			

If using a ZIP NVR / DVR with IP Cameras, then make a note of the IP Channel Settings if necessary.

*Note: if using **Manual Switch Mode** for a ZIP NVR, then **unplug** the IP Cameras before applying the firmware. Then once applied set the switch mode back to manual and then re-add the cameras.*

Apply the firmware upgrade direct via USB on the Recorder, you will need:-

- Windows PC
- USB Memory Stick
- Monitor & Mouse connected to the DVR / NVR

Disclaimer: Updating the firmware on your product carries a risk, if done incorrectly can lead to an unusable system. Please proceed at your own risk.

1.2 Updating Firmware

1. Check the firmware online and compare to the firmware in the recorder.

In the menu of the recorder go to **Tools > Info** to get firmware version.

Do not attempt the upgrade if firmware is up to date.

Do not attempt the firmware upgrade via the browser interface or ZipVision software.

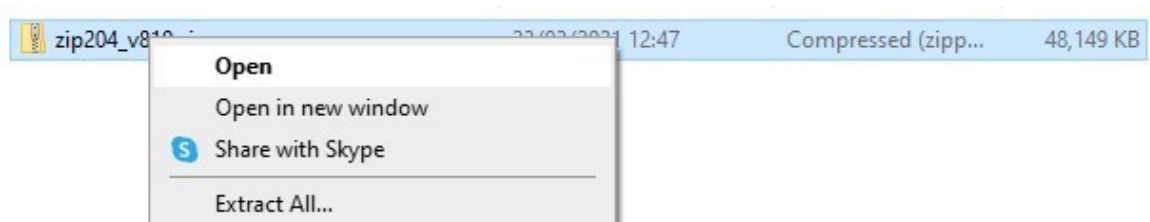
The firmware is supplied in a .zip file when downloaded.

2. **Download** the relevant firmware upgrade file onto a Windows PC

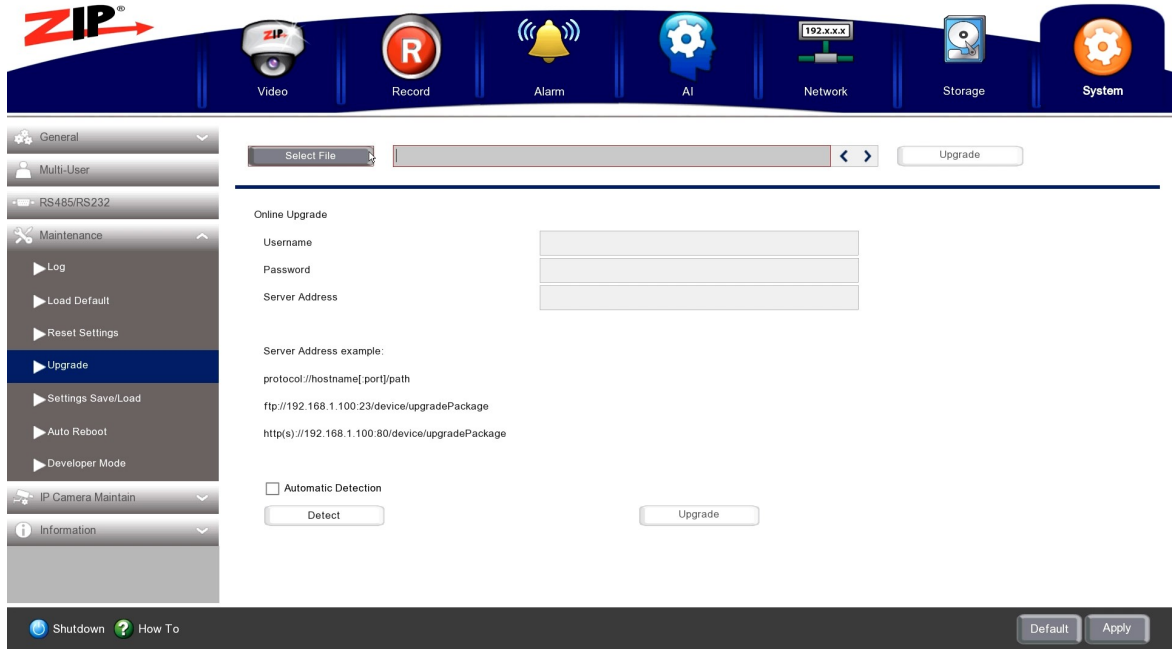
Example:-

DVR	Serial Number	Firmware
LITE004 - ZIP LITE DVR 4CH	Serial numbers starting JPI	Firmware V8.1.0-20200418 Download

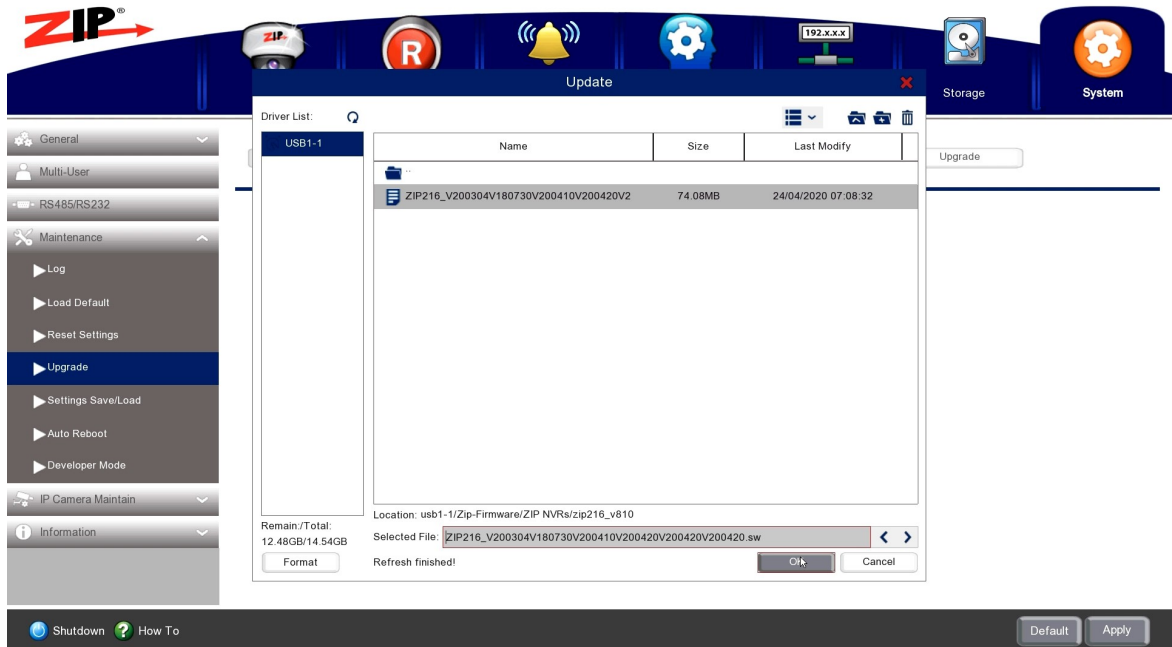
3. Right-click the file, then click **Extract All**



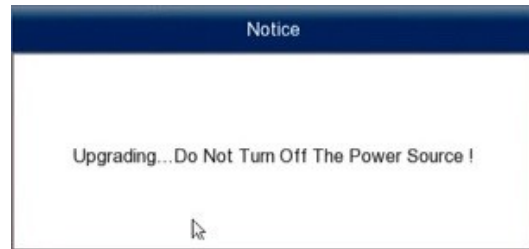
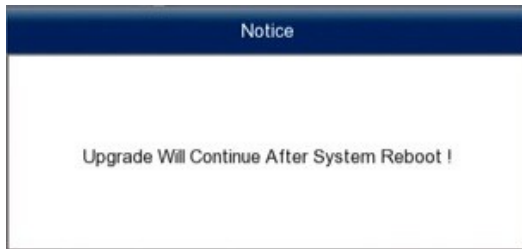
8. In the Menu navigate to: **Tools > Maintain > Update**



9. Select the **Firmware** on the USB, then select **Upgrade**



10. Leave the Recorder to perform upgrade



11. Once upgraded enter login details, temporarily and login to the menu.



12. Go to System > Maintenance > Load Default > Select All > Select Apply



13. Once the recorder reboots then the firmware upgrade is complete, network settings & camera settings can then be set back up.

Conditions

All specifications are approximate. System Q Ltd reserves the right to change any product specifications or features without notice. Whilst every effort is made to ensure that these instructions are complete and accurate, System Q Ltd cannot be held responsible in any way for any losses, no matter how they arise, from errors or omissions in these instructions, or the performance or non-performance of the equipment that these instructions refer to.



This symbol on the products and/or accompanying documents means that used electronic equipment must not be mixed with general household waste. For treatment, recovery and recycling please return this unit to your trade supplier or local designated WEE/CG0783SS collection point as defined by your local council.

© Copyright 2020

Zip is a registered trademark of System Q Ltd, Chesterfield, Derbyshire. S40 2WB